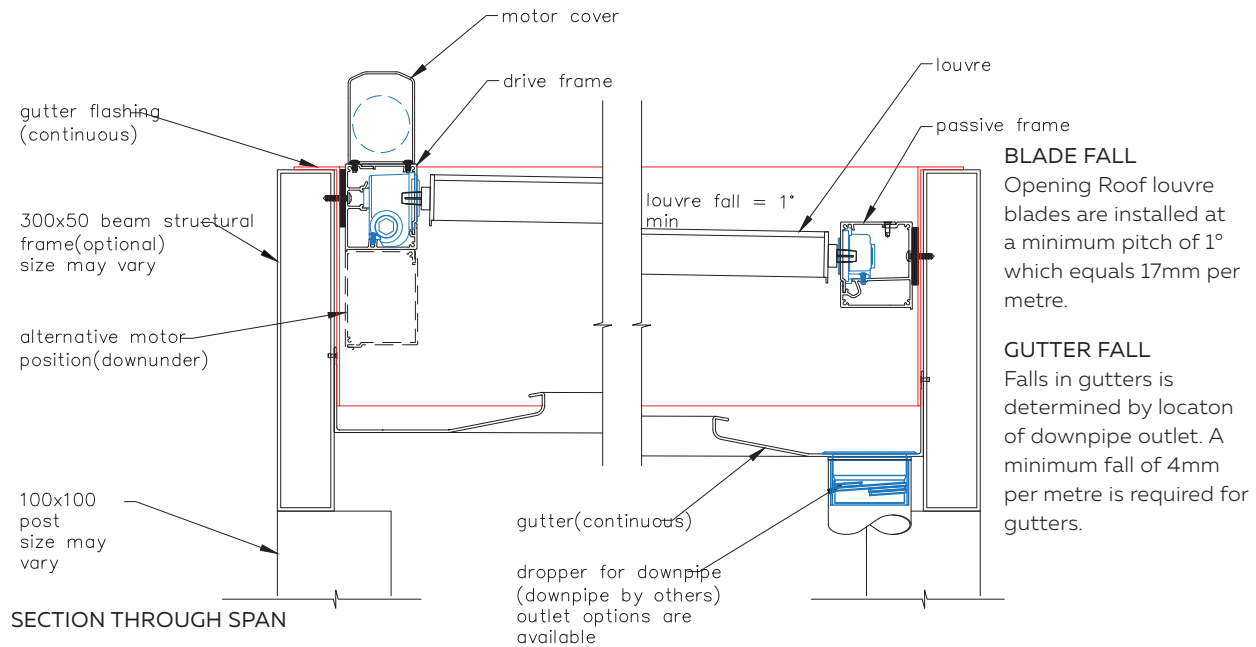


DETAILS AT A GLANCE

Motor location

Ideally locate motor on high side, pivot on low side. If due to downpipe location or power source, motor must be located on low side it is strongly recommended to use Motor Over Option.



IN MOST INSTANCES STRUCTURAL OUTER FRAME IS INSTALLED LEVEL

This allows for ease of other installation options such as Louvre Panels, Slidetec Frameless Glass Sliding Doors or Outdoor Blinds.

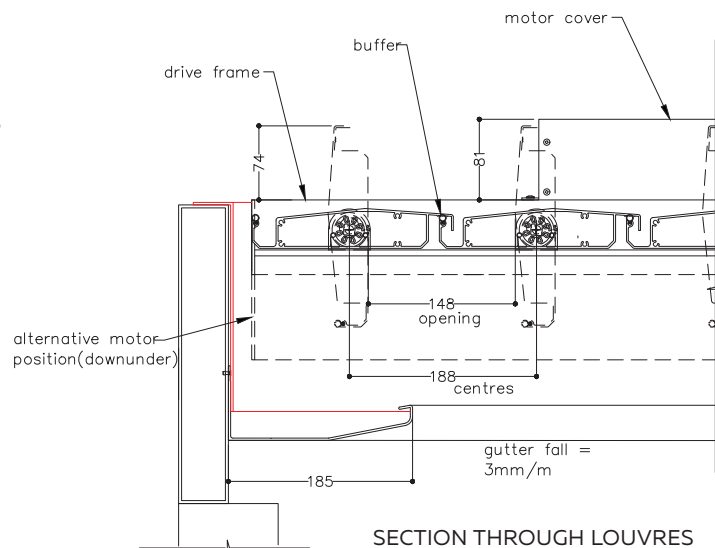
Clearances

When fixing under a soffit or overhead obstruction remember to check clearances above drive frame (or pivot frame if pivot highest side) for motor cover and for when opening roof blade is in vertical open position.

As a rule of thumb allow clearance of 100mm for all Opening Roofs excluding 270 Translucent.

For 260 Translucent allow clearance of 120mm.

Exact clearances are shown on individual spec sheets in this Design Manual.



SECTION THROUGH LOUVRES